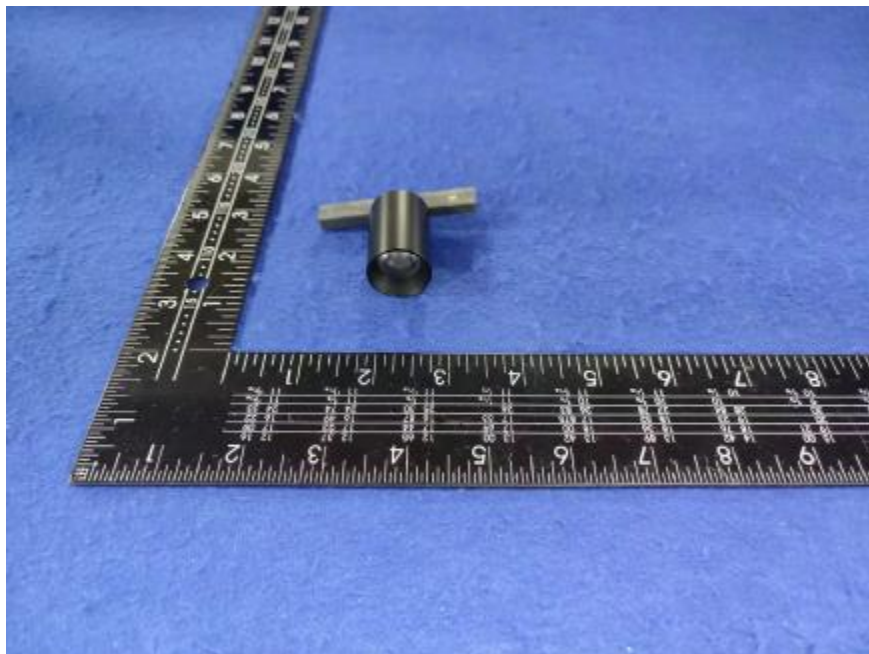


Luminaire Photograph



Light Output Ratio:	79.7%	
Luminaire Power:	2.63 W	
SHR Nominal:	0.75	Calculated using the TM5
SHR Maximum:	0.85	fine grid method.

C Range: 0 - 360DEG
C Interval: 30.0DEG
Test Speed: HIGH
Temperature: 25.3 °C
Operators: zoe
Test Date: 2024-5-4

γ Range: 0 - 180DEG
 γ Interval: 1.0DEG
Test System: EVERFINE GO-SPEX500_V1 SYSTEM V2.00.461
Humidity: 65.0%
Test Distance: 3.160m [K=1.0000]
Remarks: LAMP: BXRE-30G-11H-3A-00-0-0 Ra: 90
LENS: LL01ZZ-AF C10L06 50R
NO DRIVER: DC24V 700mA
30minutes warm-up

LUMINOUS INTENSITY DISTRIBUTION DIAGRAM

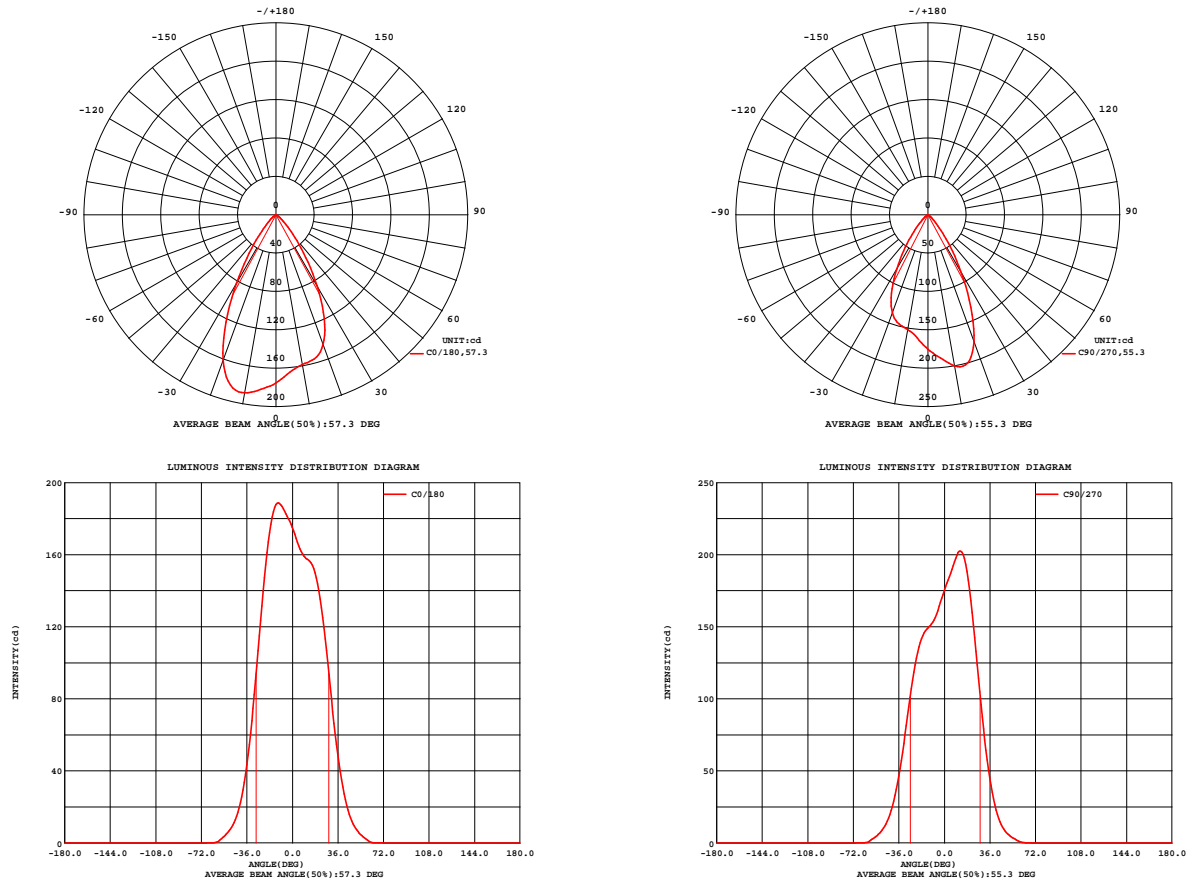


Fig. C0/C180

Fig. C90/C270

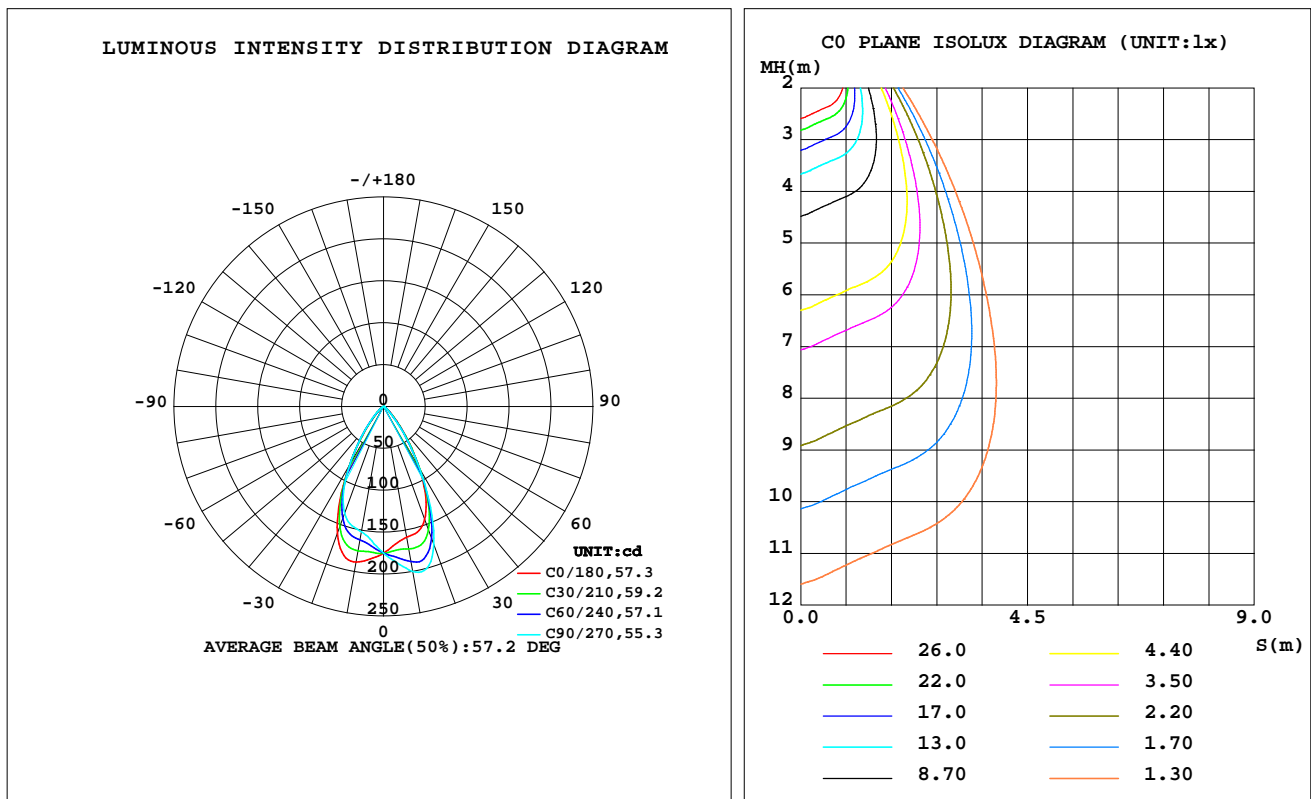
C Range: 0 - 360DEG
C Interval: 30.0DEG
Test Speed: HIGH
Temperature: 25.3 °C
Operators: zoe
Test Date: 2024-5-4

γ Range: 0 - 180DEG
 γ Interval: 1.0DEG
Test System: EVERFINE GO-SPEX500_V1 SYSTEM V2.00.461
Humidity: 65.0%
Test Distance: 3.160m [K=1.0000]
Remarks: LAMP: BXRE-30G-11H-3A-00-0-0 Ra: 90
LENS: LL01ZZ-AF C10L06 50R
NO DRIVER: DC24V 700mA
30minutes warm-up

LUMINAIRE PHOTOMETRIC TEST REPORT

Test:U:23.998V I:0.1096A P:2.6302W PF:1.0000 Freq:49.99Hz Lamp Flux:209.67x1 lm		
NAME: 2417.202	TYPE:	WEIGHT:
SPEC.: 3000K	DIM.:	SERIAL No.: 2405040524
MFR.: RISE	SUR.: 0.000346185m2	Shielding Angle:

DATA OF LAMP		PHOTOMETRIC DATA Eff: 63.49 lm/W			
MODEL	Brideglux	Imax(cd)	205.4	S/MH(C0/180)	0.87
NOMINAL POWER(W)	2.6	LOR(%)	79.7	S/MH(C90/270)	0.87
RATED VOLTAGE(V)	24	TOTAL FLUX(lm)	167.00	η UP,DN(C0-180)	0.0,41.4
NOMINAL FLUX(lm)	209.67	CIE CLASS	DIRECT	η UP,DN(C180-360)	0.0,38.2
LAMPS INSIDE	1	η up(%)	0.0	CIBSE SHR NOM	0.75
TEST VOLTAGE(V)	24	η down(%)	79.7	CIBSE SHR MAX	0.85



C Range: 0 - 360DEG
C Interval: 30.0DEG
Test Speed: HIGH
Temperature:25.3℃
Operators:zoe
Test Date:2024-5-4

γ Range: 0 - 180DEG
 γ Interval: 1.0DEG
Test System:EVERFINE GO-SPEX500_V1 SYSTEM V2.00.461
Humidity:65.0%
Test Distance:3.160m [K=1.0000]
Remarks: LAMP:BXRE-30G-11H-3A-00-0-0 Ra:90
LENS:LL01ZZ-AF C10L06 50R
NO DRIVER:DC24V 700mA
30minutes warm-up

ZONAL FLUX DIAGRAM

ZONAL FLUX DIAGRAM:

γ	C0	C45	C90	C135	C180	C225	C270	C315	γ	Φ zone	Φ total	%lum,lamp
10	158.5	180.2	199.7	201.4	188.4	168.2	151.9	149.0	0- 10	16.64	16.64	9.96,7.93
20	143.8	162.3	175.7	171.7	161.0	147.7	136.0	134.6	10- 20	47.61	64.25	38.5,30.6
30	86.09	87.32	87.41	84.44	82.31	81.88	81.48	83.80	20- 30	55.05	119.3	71.4,56.9
40	31.11	28.63	26.48	25.08	25.69	27.39	29.03	30.74	30- 40	32.65	151.9	91,72.5
50	8.160	7.079	6.395	6.360	6.660	7.230	7.859	8.188	40- 50	11.65	163.6	98,78
60	1.291	1.051	0.7729	0.5439	0.4279	0.5067	0.7612	1.165	50- 60	3.252	166.8	99.9,79.6
70	0.0007	0	0	0	0	0	0	0.0000	60- 70	0.1560	167.0	100,79.7
80	0	0	0	0	0	0	0	0	70- 80	0.0000	167.0	100,79.7
90	0	0	0	0	0	0	0	0	80- 90	0	167.0	100,79.7
100	0	0	0	0	0	0	0	0	90-100	0	167.0	100,79.7
110	0	0	0	0	0	0	0	0	100-110	0	167.0	100,79.7
120	0	0	0	0	0	0	0	0	110-120	0	167.0	100,79.7
130	0	0	0	0	0	0	0	0	120-130	0	167.0	100,79.7
140	0	0	0	0	0	0	0	0	130-140	0	167.0	100,79.7
150	0	0	0	0	0	0	0	0	140-150	0	167.0	100,79.7
160	0	0	0	0	0	0	0	0	150-160	0	167.0	100,79.7
170	0	0	0	0	0	0	0	0	160-170	0	167.0	100,79.7
180	0	0	0	0	0	0	0	0	170-180	0	167.0	100,79.7
DEG	LUMINOUS INTENSITY:cd									UNIT:lm		

C Range: 0 - 360DEG
C Interval: 30.0DEG
Test Speed: HIGH
Temperature:25.3℃
Operators:zoe
Test Date:2024-5-4

γ Range: 0 - 180DEG
 γ Interval: 1.0DEG
Test System:EVERFINE GO-SPEX500_V1 SYSTEM V2.00.461
Humidity:65.0%
Test Distance:3.160m [K=1.0000]
Remarks: LAMP:BXRE-30G-11H-3A-00-0-0 Ra:90
LENS:LL01ZZ-AF C10L06 50R
NO DRIVER:DC24V 700mA
30minutes warm-up

LUMINANCE LIMITATION CURVES

Test:U:23.998V I:0.1096A P:2.6302W PF:1.0000 Freq:49.99Hz
Lamp Flux:209.67x1 lm

NAME: 2417.202

TYPE:

WEIGHT:

SPEC.: 3000K

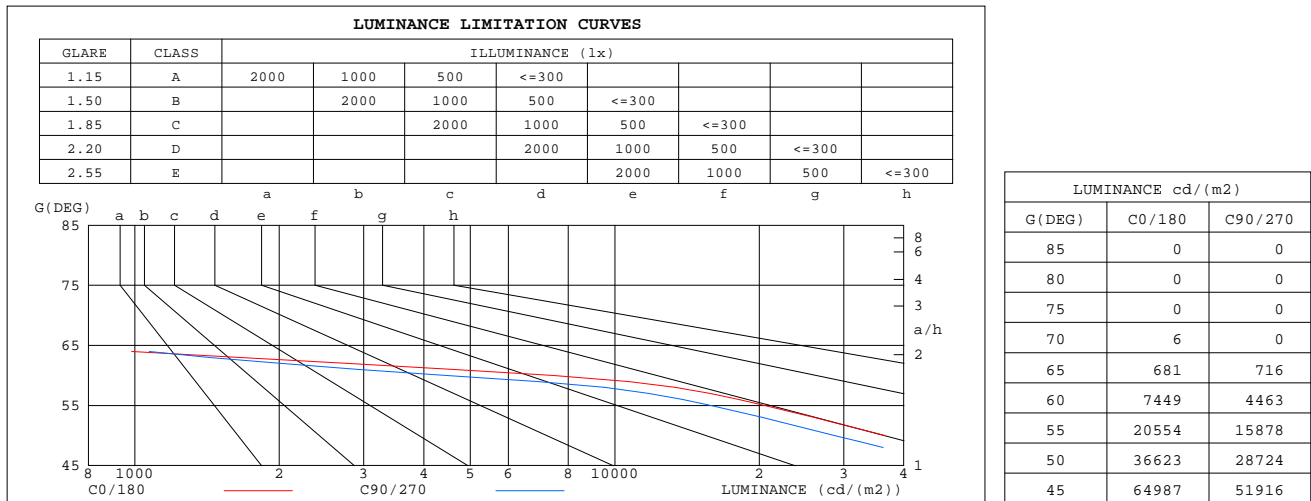
DIM.:

SERIAL No.: 2405040524

MFR.: RISE

SUR.: 0.000346185m2

Shielding Angle:



C Range: 0 - 360DEG
C Interval: 30.0DEG
Test Speed: HIGH
Temperature:25.3℃
Operators:zoe
Test Date:2024-5-4

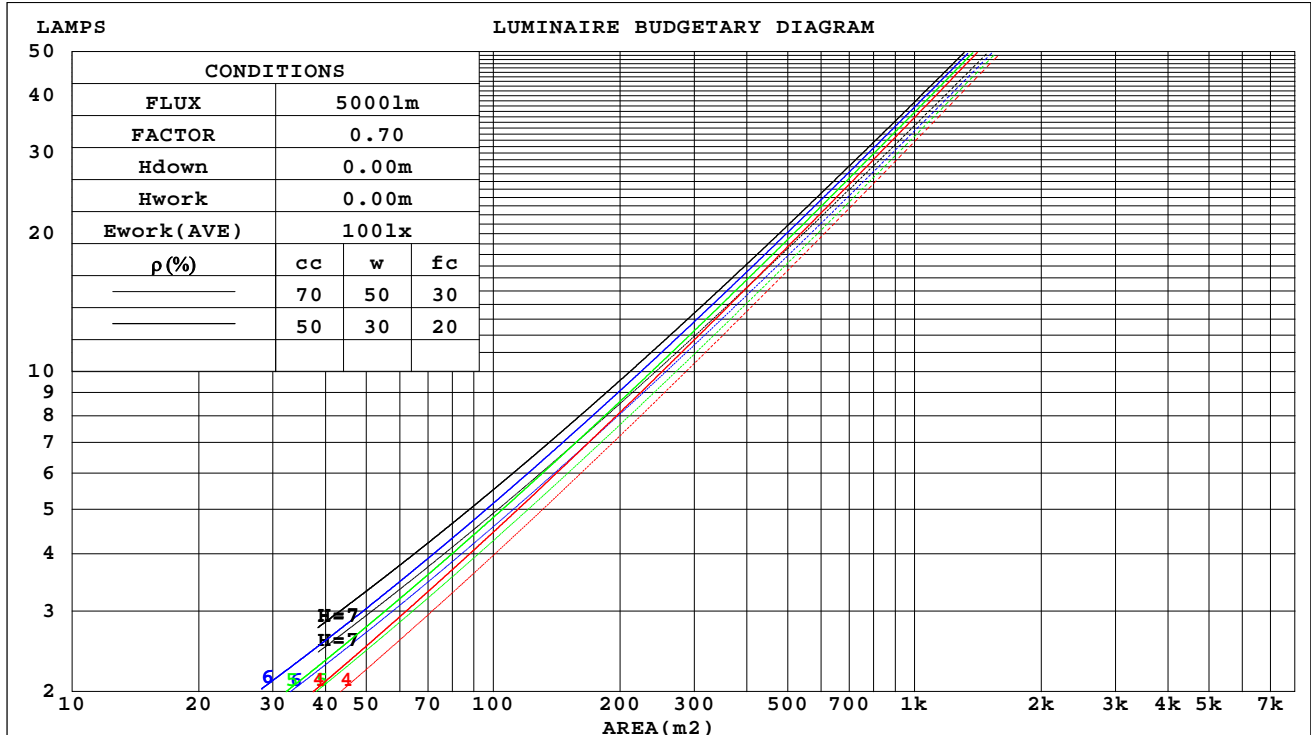
γ Range: 0 - 180DEG
γ Interval: 1.0DEG
Test System:EVERFINE GO-SPEX500_V1 SYSTEM V2.00.461
Humidity:65.0%
Test Distance:3.160m [K=1.0000]
Remarks: LAMP:BXRE-30G-11H-3A-00-0-0 Ra:90
LENS:LL01ZZ-AF C10L06 50R
NO DRIVER:DC24V 700mA
30minutes warm-up

CU AND LUMINAIRE BUDGETARY ESTIMATE DIAGRAM

Test:U:23.998V I:0.1096A P:2.6302W PF:1.0000 Freq:49.99Hz
Lamp Flux:209.67x1 lm

NAME: 2417.202	TYPE:	WEIGHT:
SPEC.: 3000K	DIM.:	SERIAL No.: 2405040524
MFR.: RISE	SUR.: 0.000346185m2	Shielding Angle:

pcc	80%			70%			50%			30%			10%			0
pw	50%	30%	10%	50%	30%	10%	50%	30%	10%	50%	30%	10%	50%	30%	10%	0
pfc	20%			20%			20%			20%			20%			0
RCR	RCR:Room Cavity Ratio															



C Range: 0 - 360DEG
C Interval: 30.0DEG
Test Speed: HIGH
Temperature:25.3℃
Operators:zoe
Test Date:2024-5-4

γ Range: 0 - 180DEG
γ Interval: 1.0DEG
Test System:EVERFINE GO-SPEX500_V1 SYSTEM V2.00.461
Humidity:65.0%
Test Distance:3.160m [K=1.0000]
Remarks: LAMP:BXRE-30G-11H-3A-00-0-0 Ra:90
LENS:LL01ZZ-AF C10L06 50R
NO DRIVER:DC24V 700mA
30minutes warm-up



WEC AND CCEC

Test:U:23.998V I:0.1096A P:2.6302W PF:1.0000 Freq:49.99Hz Lamp Flux:209.67x1 lm		
NAME: 2417.202	TYPE:	WEIGHT:
SPEC.: 3000K	DIM.:	SERIAL No.: 2405040524
MFR.: RISE	SUR.: 0.000346185m2	Shielding Angle:

ρ_{cc}	80%			70%			50%			30%			10%			0
ρ_w	50%	30%	10%	50%	30%	10%	50%	30%	10%	50%	30%	10%	50%	30%	10%	0
ρ_{fc}	20%			20%			20%			20%			20%			0
RCR	RCR:Room Cavity Ratio						Wall Exitance Coefficients(WEC)									
0.0																
1.0	.142	.081	.026	.136	.078	.025	.126	.072	.023	.117	.068	.022	.109	.063	.020	
2.0	.136	.075	.023	.132	.073	.022	.123	.069	.021	.116	.065	.020	.108	.061	.019	
3.0	.130	.069	.021	.126	.068	.020	.119	.065	.020	.112	.062	.019	.106	.059	.018	
4.0	.124	.065	.019	.121	.063	.019	.115	.061	.018	.109	.058	.018	.104	.056	.017	
5.0	.119	.060	.018	.116	.059	.017	.110	.057	.017	.105	.056	.017	.101	.054	.016	
6.0	.113	.057	.016	.111	.056	.016	.106	.054	.016	.102	.053	.016	.097	.051	.015	
7.0	.108	.054	.015	.106	.053	.015	.102	.052	.015	.098	.050	.015	.094	.049	.014	
8.0	.104	.051	.014	.102	.050	.014	.098	.049	.014	.094	.048	.014	.091	.047	.014	
9.0	.099	.048	.013	.098	.048	.013	.094	.047	.013	.091	.046	.013	.088	.045	.013	
10.0	.095	.046	.013	.094	.045	.013	.091	.044	.013	.088	.044	.012	.085	.043	.012	

ρ_{cc}	80%			70%			50%			30%			10%			0
ρ_w	50%	30%	10%	50%	30%	10%	50%	30%	10%	50%	30%	10%	50%	30%	10%	0
ρ_{fc}	20%			20%			20%			20%			20%			0
RCR	RCR:Room Cavity Ratio			Ceiling Cavity Exitance Coefficients(CCEC)												
0.0	.152	.152	.152	.130	.130	.130	.089	.089	.089	.051	.051	.051	.016	.016	.016	
1.0	.136	.125	.115	.117	.108	.099	.080	.074	.069	.046	.043	.040	.015	.014	.013	
2.0	.124	.106	.090	.107	.091	.078	.073	.063	.054	.042	.037	.032	.014	.012	.010	
3.0	.115	.090	.071	.098	.078	.062	.067	.054	.043	.039	.032	.026	.013	.010	.008	
4.0	.107	.079	.057	.092	.068	.050	.063	.047	.035	.036	.028	.021	.012	.009	.007	
5.0	.100	.070	.047	.086	.060	.041	.059	.042	.029	.034	.025	.017	.011	.008	.006	
6.0	.094	.062	.039	.081	.054	.034	.056	.038	.024	.032	.022	.014	.010	.007	.005	
7.0	.089	.056	.033	.077	.049	.029	.053	.034	.021	.031	.020	.012	.010	.007	.004	
8.0	.085	.051	.028	.073	.045	.025	.050	.031	.018	.029	.018	.010	.009	.006	.003	
9.0	.081	.047	.025	.069	.041	.022	.048	.029	.015	.028	.017	.009	.009	.006	.003	
10.0	.077	.044	.022	.066	.038	.019	.046	.027	.013	.027	.016	.008	.009	.005	.003	

C Range: 0 - 360DEG
C Interval: 30.0DEG
Test Speed: HIGH
Temperature:25.3℃
Operators:zoe
Test Date:2024-5-4

γ Range: 0 - 180DEG
 γ Interval: 1.0DEG
Test System:EVERFINE GO-SPEX500_V1 SYSTEM V2.00.461
Humidity:65.0%
Test Distance:3.160m [K=1.0000]
Remarks: LAMP:BXRE-30G-11H-3A-00-0-0 Ra:90
LENS:LL01ZZ-AF C10L06 50R
NO DRIVER:DC24V 700mA
30minutes warm-up

UGR(Unified Glare Rating) Table

Test:U:23.998V I:0.1096A P:2.6302W PF:1.0000 Freq:49.99Hz Lamp Flux:209.67x1 lm										
NAME: 2417.202					TYPE:			WEIGHT:		
SPEC.: 3000K					DIM.:			SERIAL No.: 2405040524		
MFR.: RISE					SUR.: 0.000346185m2			Shielding Angle:		
ceiling/cavity	0.7	0.7	0.5	0.5	0.3	0.7	0.7	0.5	0.5	0.3
walls	0.5	0.3	0.5	0.3	0.3	0.5	0.3	0.5	0.3	0.3
working plane	0.2	0.2	0.2	0.2	0.2	0.2	0.2	0.2	0.2	0.2
Room dimensions	Viewed crosswise					Viewed endwise				
x = 2H y = 2H	27.9	28.9	28.1	29.0	29.2	27.4	28.4	27.6	28.5	28.7
3H	27.7	28.6	28.0	28.8	29.0	27.2	28.1	27.5	28.3	28.5
4H	27.6	28.5	27.9	28.7	28.9	27.2	28.0	27.4	28.2	28.4
6H	27.6	28.3	27.8	28.6	28.8	27.1	27.8	27.4	28.1	28.3
8H	27.5	28.3	27.8	28.5	28.8	27.0	27.8	27.3	28.0	28.3
12H	27.5	28.2	27.8	28.4	28.7	27.0	27.7	27.3	28.0	28.2
4H 2H	27.7	28.5	27.9	28.7	28.9	27.2	28.0	27.5	28.2	28.5
3H	27.5	28.2	27.8	28.5	28.7	27.0	27.7	27.3	28.0	28.3
4H	27.4	28.0	27.7	28.3	28.6	26.9	27.6	27.3	27.9	28.2
6H	27.3	27.9	27.7	28.2	28.5	26.8	27.4	27.2	27.7	28.1
8H	27.2	27.8	27.6	28.1	28.5	26.8	27.3	27.2	27.6	28.0
12H	27.2	27.7	27.6	28.0	28.4	26.7	27.2	27.1	27.6	28.0
8H 4H	27.2	27.8	27.6	28.1	28.5	26.8	27.3	27.2	27.6	28.0
6H	27.1	27.6	27.6	28.0	28.4	26.7	27.1	27.1	27.5	27.9
8H	27.1	27.5	27.5	27.9	28.3	26.6	27.0	27.1	27.4	27.8
12H	27.0	27.4	27.5	27.8	28.3	26.5	26.9	27.0	27.3	27.8
12H 4H	27.2	27.7	27.6	28.0	28.4	26.7	27.2	27.1	27.6	28.0
6H	27.1	27.5	27.5	27.9	28.3	26.6	27.0	27.1	27.4	27.8
8H	27.0	27.4	27.5	27.8	28.3	26.5	26.9	27.0	27.3	27.8
Variations with the observer position at spacings(CIE Pub.117):										
S = 1.0H	+ 3.0 / - 9.2					+ 3.0 / -10.4				
1.5H	+ 4.6 / - 6.4					+ 4.7 / - 6.5				
2.0H	+ 5.9 / -19.4					+ 5.5 / -18.3				

CIE Pub.117, 209.7 lm Total Lamp Luminous Flux Correct (8log(F/F0) = -5.4)
Area: 0.000346185 m2

C Range: 0 - 360DEG
C Interval: 30.0DEG
Test Speed: HIGH
Temperature:25.3℃
Operators:zoe
Test Date:2024-5-4

γ Range: 0 - 180DEG
γ Interval: 1.0DEG
Test System:EVERFINE GO-SPEX500_V1 SYSTEM V2.00.461
Humidity:65.0%
Test Distance:3.160m [K=1.0000]
Remarks: LAMP:BXRE-30G-11H-3A-00-0-0 Ra:90
LENS:LL01ZZ-AF C10L06 50R
NO DRIVER:DC24V 700mA
30minutes warm-up

UTILIZATION FACTORS TABLE

Test:U:23.998V I:0.1096A P:2.6302W PF:1.0000 Freq:49.99Hz Lamp Flux:209.67x1 lm		
NAME: 2417.202	TYPE:	WEIGHT:
SPEC.: 3000K	DIM.:	SERIAL No.: 2405040524
MFR.: RISE	SUR.: 0.000346185m2	Shielding Angle:

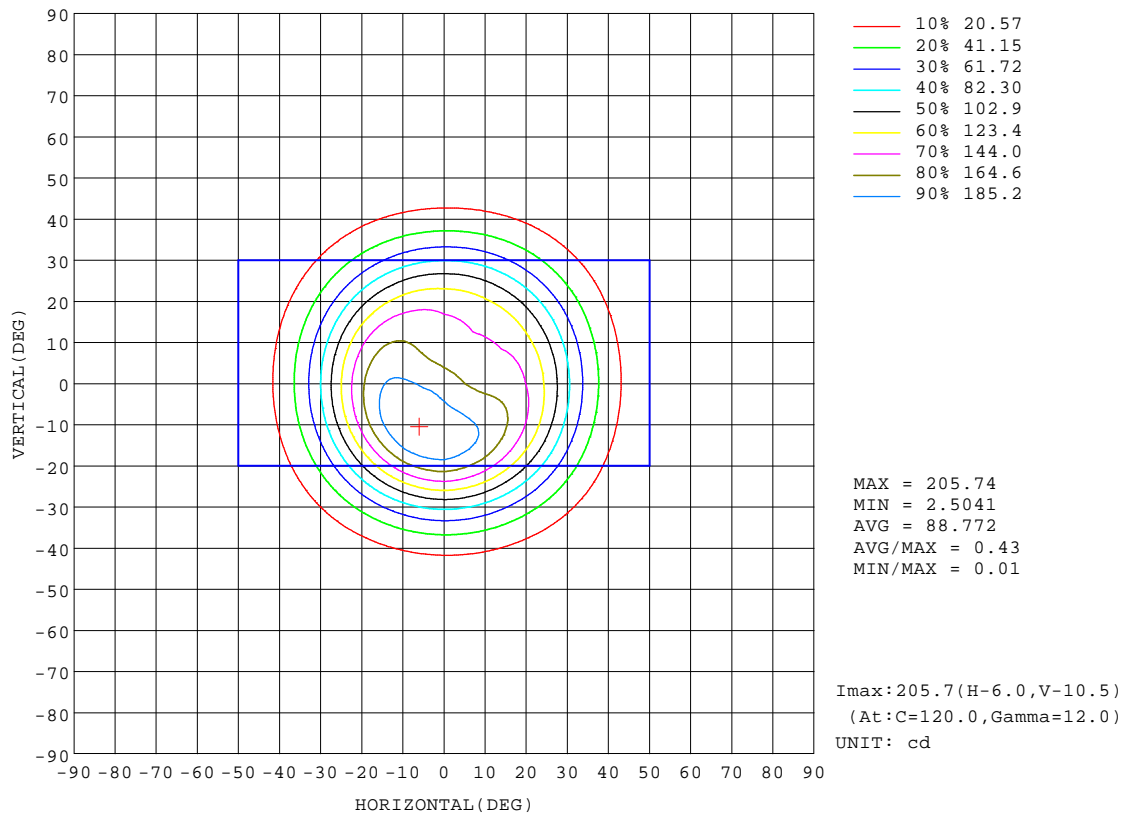
REFLECTANCE										
Ceiling	0.8	0.8	0.8	0.7	0.7	0.7	0.5	0.5	0.5	0
Walls	0.7	0.5	0.3	0.7	0.5	0.3	0.7	0.5	0.3	0
Working plane	0.2	0.2	0.2	0.2	0.2	0.2	0.2	0.2	0.2	0
ROOM INDEX	UTILIZATION FACTORS(PERCENT) $k(RI) \times RCR = 5$									
k = 0.60	68	63	60	68	63	60	67	63	60	57
0.80	75	70	67	74	69	66	73	69	66	63
1.00	78	74	71	78	73	71	76	73	70	67
1.25	82	78	75	81	77	74	79	76	74	70
1.50	84	80	77	83	80	77	81	78	76	73
2.00	86	83	80	85	82	80	83	81	79	74
2.50	88	85	82	86	84	81	84	82	80	75
3.00	89	86	84	87	85	83	85	83	81	76
4.00	91	88	86	89	87	85	86	84	83	78
5.00	91	90	88	90	88	87	87	85	84	78
ROOM INDEX	UF(total)									Direct
According to DIN EN 13032-2 2004			Suspended					SHRNOM = 1.25		

C Range: 0 - 360DEG
C Interval: 30.0DEG
Test Speed: HIGH
Temperature:25.3℃
Operators:zoe
Test Date:2024-5-4

γ Range: 0 - 180DEG
γ Interval: 1.0DEG
Test System:EVERFINE GO-SPEX500_V1 SYSTEM V2.00.461
Humidity:65.0%
Test Distance:3.160m [K=1.0000]
Remarks: LAMP:BXRE-30G-11H-3A-00-0-0 Ra:90
LENS:LL01ZZ-AF C10L06 50R
NO DRIVER:DC24V 700mA
30minutes warm-up

ISOCANDELA DIAGRAM

Test:U:23.998V I:0.1096A P:2.6302W PF:1.0000 Freq:49.99Hz Lamp Flux:209.67x1 lm		
NAME: 2417.202	TYPE:	WEIGHT:
SPEC.: 3000K	DIM.:	SERIAL No.: 2405040524
MFR.: RISE	SUR.: 0.000346185m2	Shielding Angle:

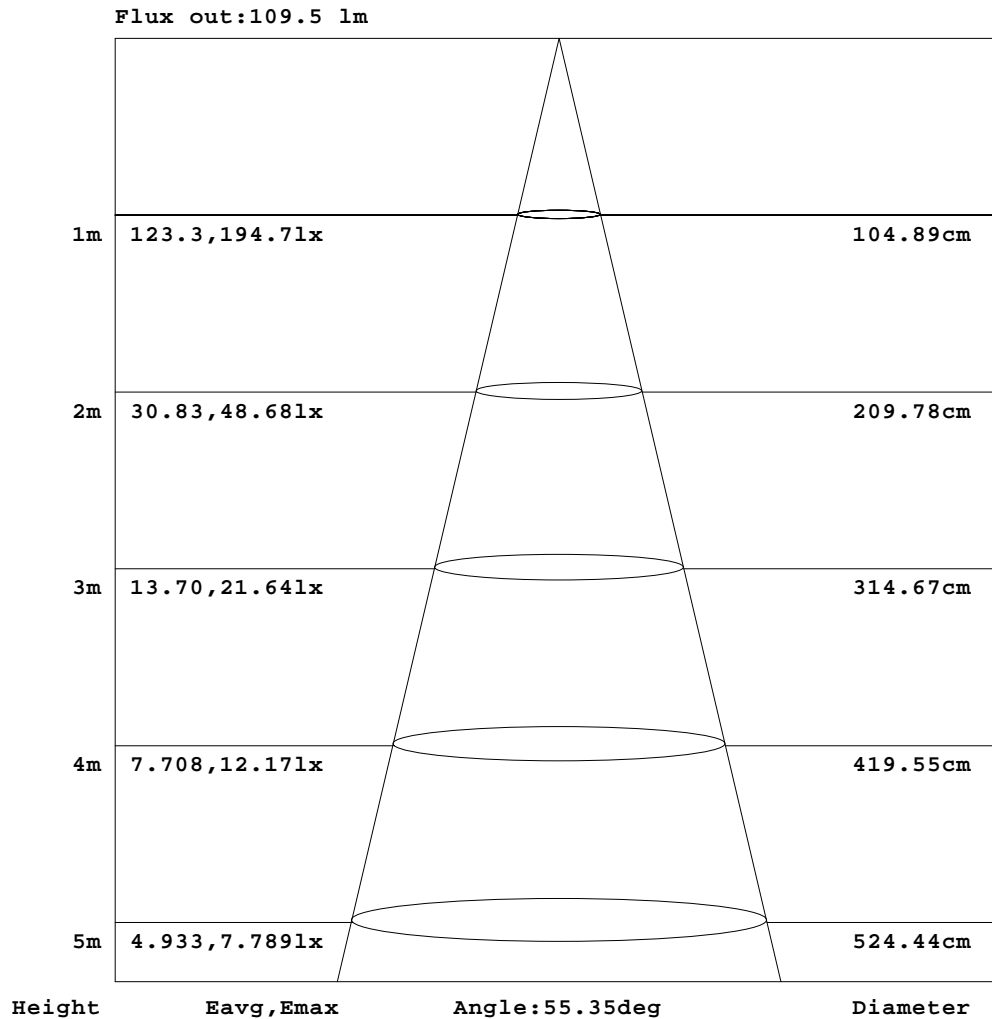


C Range: 0 - 360DEG
C Interval: 30.0DEG
Test Speed: HIGH
Temperature:25.3℃
Operators:zoe
Test Date:2024-5-4

γ Range: 0 - 180DEG
γ Interval: 1.0DEG
Test System:EVERFINE GO-SPEX500_V1 SYSTEM V2.00.461
Humidity:65.0%
Test Distance:3.160m [K=1.0000]
Remarks: LAMP:BXRE-30G-11H-3A-00-0-0 Ra:90
LENS:LL01ZZ-AF C10L06 50R
NO DRIVER:DC24V 700mA
30minutes warm-up

AAI Figure

Test:U:23.998V I:0.1096A P:2.6302W PF:1.0000 Freq:49.99Hz Lamp Flux:209.67x1 lm		
NAME: 2417.202	TYPE:	WEIGHT:
SPEC.: 3000K	DIM.:	SERIAL No.: 2405040524
MFR.: RISE	SUR.: 0.000346185m2	Shielding Angle:



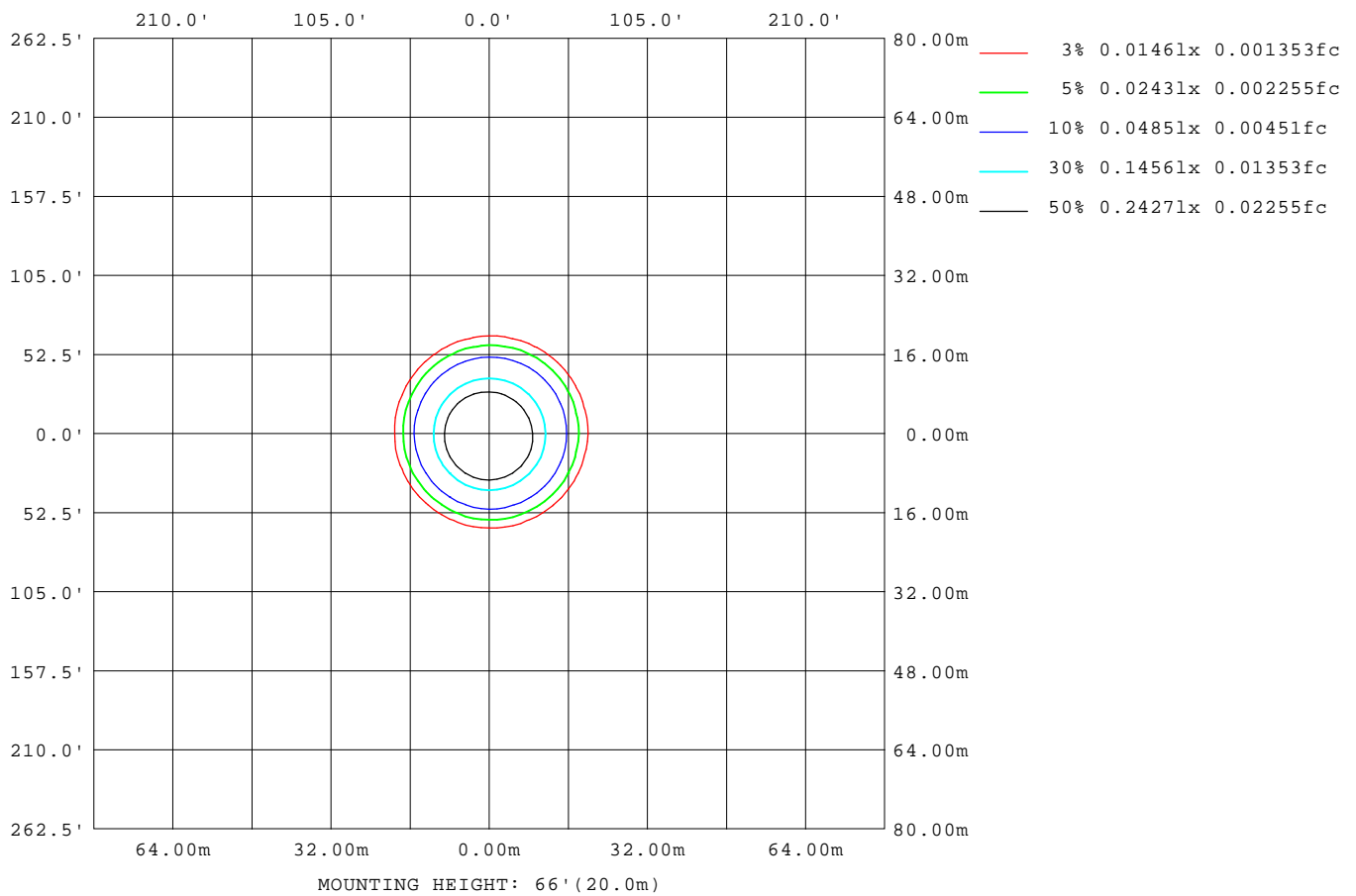
Note: The Curves indicate the illuminated area and the average illumination when the luminaire is at different distance.

C Range: 0 - 360DEG
C Interval: 30.0DEG
Test Speed: HIGH
Temperature: 25.3 °C
Operators: zoe
Test Date: 2024-5-4

γ Range: 0 - 180DEG
γ Interval: 1.0DEG
Test System: EVERFINE GO-SPEX500_V1 SYSTEM V2.00.461
Humidity: 65.0%
Test Distance: 3.160m [K=1.0000]
Remarks: LAMP: BXRE-30G-11H-3A-00-0-0 Ra: 90
LENS: LL01ZZ-AF C10L06 50R
NO DRIVER: DC24V 700mA
30minutes warm-up

ISOLUX DIAGRAM

Test:U:23.998V I:0.1096A P:2.6302W PF:1.0000 Freq:49.99Hz Lamp Flux:209.67x1 lm		
NAME: 2417.202	TYPE:	WEIGHT:
SPEC.: 3000K	DIM.:	SERIAL No.: 2405040524
MFR.: RISE	SUR.: 0.000346185m2	Shielding Angle:



C Range: 0 - 360DEG
C Interval: 30.0DEG
Test Speed: HIGH
Temperature: 25.3 °C
Operators: zoe
Test Date: 2024-5-4

γ Range: 0 - 180DEG
γ Interval: 1.0DEG
Test System: EVERFINE GO-SPEX500_V1 SYSTEM V2.00.461
Humidity: 65.0%
Test Distance: 3.160m [K=1.0000]
Remarks: LAMP: BXRE-30G-11H-3A-00-0-0 Ra: 90
LENS: LL01ZZ-AF C10L06 50R
NO DRIVER: DC24V 700mA
30minutes warm-up

LED Avg.L Report

Test:U:23.998V I:0.1096A P:2.6302W PF:1.0000 Freq:49.99Hz Lamp Flux:209.67x1 lm		
NAME: 2417.202	TYPE:	WEIGHT:
SPEC.: 3000K	DIM.:	SERIAL No.: 2405040524
MFR.: RISE	SUR.: 0.000346185m2	Shielding Angle:

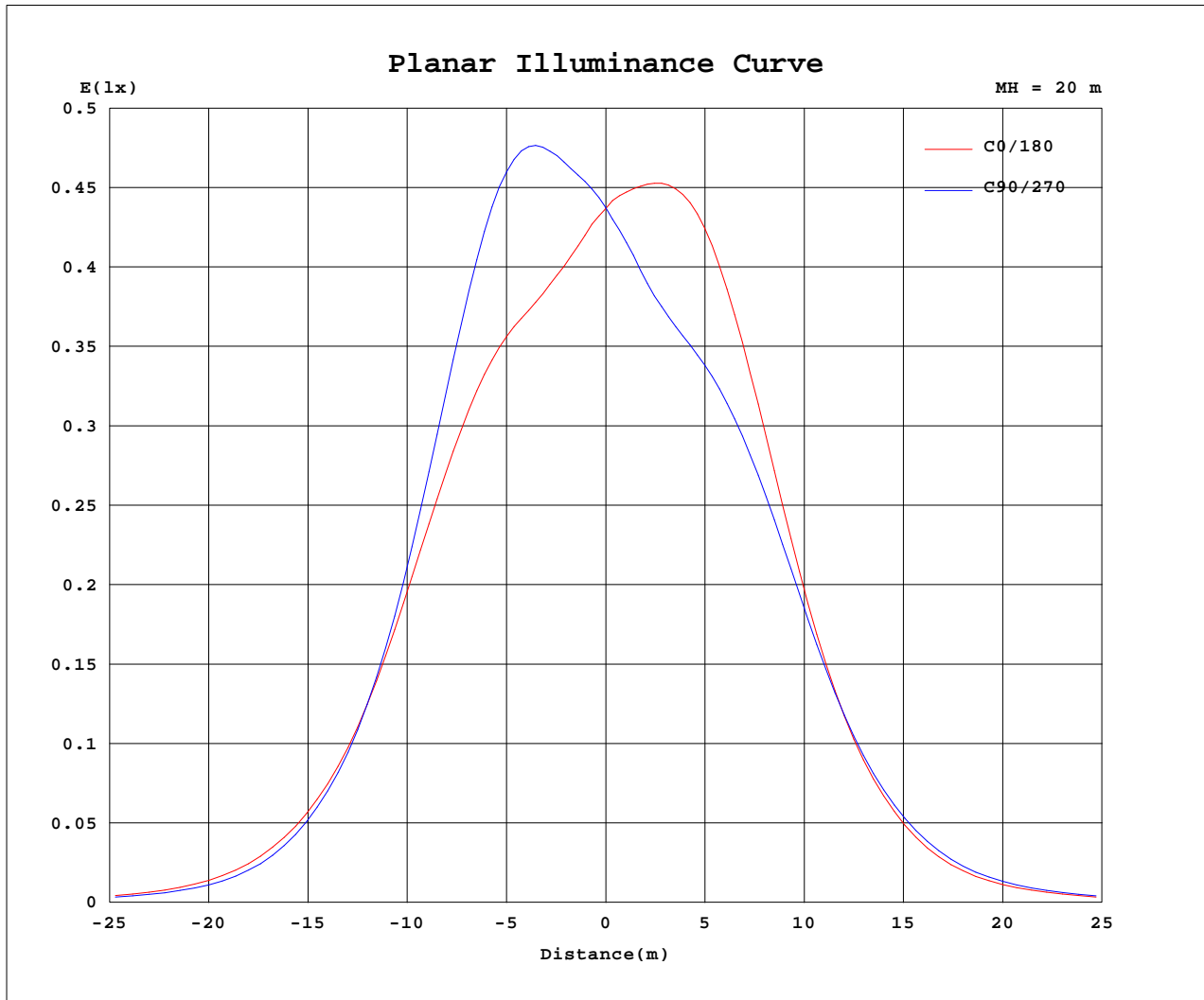
AvgL	cd/m2
L_0~180(65)av	399
L_0~180(75)av	0
L_0~180(85)av	0
L_90~270(65)av	588
L_90~270(75)av	0
L_90~270(85)av	0
L_45(65)av	435
L_45(75)av	0
L_45(85)av	0

Standard: GB/T 29293-2012

C Range: 0 - 360DEG
C Interval: 30.0DEG
Test Speed: HIGH
Temperature:25.3℃
Operators:zoe
Test Date:2024-5-4

γ Range: 0 - 180DEG
γ Interval: 1.0DEG
Test System:EVERFINE GO-SPEX500_V1 SYSTEM V2.00.461
Humidity:65.0%
Test Distance:3.160m [K=1.0000]
Remarks: LAMP:BXRE-30G-11H-3A-00-0-0 Ra:90
LENS:LL01ZZ-AF C10L06 50R
NO DRIVER:DC24V 700mA
30minutes warm-up

Planar Illuminance Curve



C Range: 0 - 360DEG
 C Interval: 30.0DEG
 Test Speed: HIGH
 Temperature: 25.3 °C
 Operators: zoe
 Test Date: 2024-5-4

γ Range: 0 - 180DEG
 γ Interval: 1.0DEG
 Test System: EVERFINE GO-SPEX500_V1 SYSTEM V2.00.461
 Humidity: 65.0%
 Test Distance: 3.160m [K=1.0000]
 Remarks: LAMP: BXRE-30G-11H-3A-00-0-0 Ra: 90
 LENS: LL01ZZ-AF C10L06 50R
 NO DRIVER: DC24V 700mA
 30minutes warm-up



LUMINOUS DISTRIBUTION INTENSITY DATA

Test:U:23.998V I:0.1096A P:2.6302W PF:1.0000 Freq:49.99Hz Lamp Flux:209.67x1 lm		
NAME: 2417.202	TYPE:	WEIGHT:
SPEC.: 3000K	DIM.:	SERIAL No.: 2405040524
MFR.: RISE	SUR.: 0.000346185m2	Shielding Angle:

Table--1

UNIT: cd

C(DEG) γ (DEG)	0	30	60	90	120	150	180	210	240	270	300	330						
0	175	175	175	175	175	175	175	175	175	175	175	175						
5	165	172	181	187	190	188	183	174	167	161	159	160						
10	158	172	188	200	203	199	188	175	162	152	148	150						
15	155	171	188	200	201	195	184	171	157	147	143	145						
20	144	157	168	176	175	169	161	153	143	136	133	136						
25	119	126	130	133	131	127	123	120	116	113	113	115						
30	86.1	87.8	86.8	87.4	85.7	83.2	82.3	82.2	81.6	81.5	83.1	84.5						
35	54.6	54.1	51.8	51.2	49.6	48.6	48.9	49.8	50.7	51.7	53.3	54.3						
40	31.1	29.8	27.4	26.5	25.1	25.1	25.7	26.7	28.1	29.0	30.3	31.1						
45	15.9	14.8	13.3	12.7	12.3	12.5	12.9	13.6	14.5	15.1	15.8	16.2						
50	8.16	7.50	6.66	6.40	6.25	6.46	6.66	7.00	7.46	7.86	8.09	8.29						
55	4.09	3.74	3.29	3.15	3.02	3.06	3.10	3.29	3.64	3.92	4.06	4.17						
60	1.29	1.19	0.91	0.77	0.59	0.50	0.43	0.44	0.57	0.76	1.08	1.25						
65	0.10	0.11	0.12	0.10	0.04	0.02	0.02	0.02	0.04	0.07	0.08	0.08						
70	0.00	0.00	0.00	0.00	0.00	0.00	0.00	0.00	0.00	0.00	0.00	0.00						
75	0.00	0.00	0.00	0.00	0.00	0.00	0.00	0.00	0.00	0.00	0.00	0.00						
80	0.00	0.00	0.00	0.00	0.00	0.00	0.00	0.00	0.00	0.00	0.00	0.00						
85	0.00	0.00	0.00	0.00	0.00	0.00	0.00	0.00	0.00	0.00	0.00	0.00						
90	0.00	0.00	0.00	0.00	0.00	0.00	0.00	0.00	0.00	0.00	0.00	0.00						
95	0.00	0.00	0.00	0.00	0.00	0.00	0.00	0.00	0.00	0.00	0.00	0.00						
100	0.00	0.00	0.00	0.00	0.00	0.00	0.00	0.00	0.00	0.00	0.00	0.00						
105	0.00	0.00	0.00	0.00	0.00	0.00	0.00	0.00	0.00	0.00	0.00	0.00						
110	0.00	0.00	0.00	0.00	0.00	0.00	0.00	0.00	0.00	0.00	0.00	0.00						
115	0.00	0.00	0.00	0.00	0.00	0.00	0.00	0.00	0.00	0.00	0.00	0.00						
120	0.00	0.00	0.00	0.00	0.00	0.00	0.00	0.00	0.00	0.00	0.00	0.00						
125	0.00	0.00	0.00	0.00	0.00	0.00	0.00	0.00	0.00	0.00	0.00	0.00						
130	0.00	0.00	0.00	0.00	0.00	0.00	0.00	0.00	0.00	0.00	0.00	0.00						
135	0.00	0.00	0.00	0.00	0.00	0.00	0.00	0.00	0.00	0.00	0.00	0.00						
140	0.00	0.00	0.00	0.00	0.00	0.00	0.00	0.00	0.00	0.00	0.00	0.00						
145	0.00	0.00	0.00	0.00	0.00	0.00	0.00	0.00	0.00	0.00	0.00	0.00						
150	0.00	0.00	0.00	0.00	0.00	0.00	0.00	0.00	0.00	0.00	0.00	0.00						
155	0.00	0.00	0.00	0.00	0.00	0.00	0.00	0.00	0.00	0.00	0.00	0.00						
160	0.00	0.00	0.00	0.00	0.00	0.00	0.00	0.00	0.00	0.00	0.00	0.00						
165	0.00	0.00	0.00	0.00	0.00	0.00	0.00	0.00	0.00	0.00	0.00	0.00						
170	0.00	0.00	0.00	0.00	0.00	0.00	0.00	0.00	0.00	0.00	0.00	0.00						
175	0.00	0.00	0.00	0.00	0.00	0.00	0.00	0.00	0.00	0.00	0.00	0.00						
180	0.00	0.00	0.00	0.00	0.00	0.00	0.00	0.00	0.00	0.00	0.00	0.00						

C Range: 0 - 360DEG
C Interval: 30.0DEG
Test Speed: HIGH
Temperature:25.3℃
Operators:zoe
Test Date:2024-5-4

γ Range: 0 - 180DEG
γ Interval: 1.0DEG
Test System:EVERFINE GO-SPEX500_V1 SYSTEM V2.00.461
Humidity:65.0%
Test Distance:3.160m [K=1.0000]
Remarks: LAMP:BXRE-30G-11H-3A-00-0-0 Ra:90
LENS:LL01ZZ-AF C10L06 50R
NO DRIVER:DC24V 700mA
30minutes warm-up